

# Adobe Connect – Getting ready for the conference

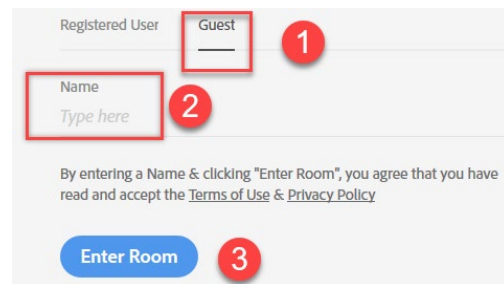
Below you will find important information about how you can prepare yourself and configure your computer to participate in the Adobe Connect conference activities.

## Adobe Connect for conference participants

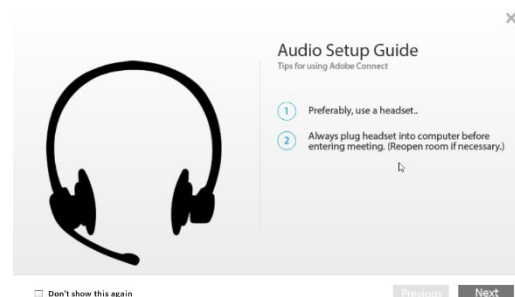
As a conference participant you need to install the [Adobe Connect application and run the Diagnostic Test](#) in order to participate in the different kinds of online activities which will take place in Adobe Connect. Furthermore, we strongly recommend the you use a headset with a usb-connection to your computer and not mobile earphones.

## Getting ready and test your computer, sound and webcam

1. If possible, connect your computer to a wired internet connection or second best a wireless internet connection
2. Plug-in your headset to your computer and webcam if you use an external one
3. Go to the test room and login as Guest <https://c.deic.dk/testingroom>



4. Follow the Audio Setup Guide carefully



5. Run the Audio Setup Wizard which you will find in the top-left menu 'Meeting'. Make sure that you speaker and microphone work properly
6. You are now ready for participating in the conference activities via Adobe Connect

### Adobe Connect for paper presenters

1. Follow the recommendations for conference participants on page one
2. We will upload your presentation to the assigned meeting room but familiarize yourself with how to turn pages in your PowerPoint presentation via this [video](#)
3. If you want to run [polls](#) in Adobe Connect you also need to send us the questions and answers in advance (Adobe Connect only supports multiple choice, multiple answers and open-ended questions)
4. Please note that you cannot play embedded videos in your PowerPoint. If you want participants to watch a video, link it from your PowerPoint so that it can be played locally.

### Adobe Connect for workshop and roundtable presenters

1. Follow the recommendations for conference participants on page one
2. We will upload your presentation to the assigned meeting room but familiarize yourself with how to turn pages in your PowerPoint presentation via this [video](#)
3. If you want to run [polls](#) in Adobe Connect you also need to send us the questions and answers in advance (Adobe Connect only supports multiple choice, multiple answers and short answer)
4. Please note that you cannot play embedded videos in your PowerPoint. If you want participants to watch a video, link to it from your PowerPoint so that it can be played locally.